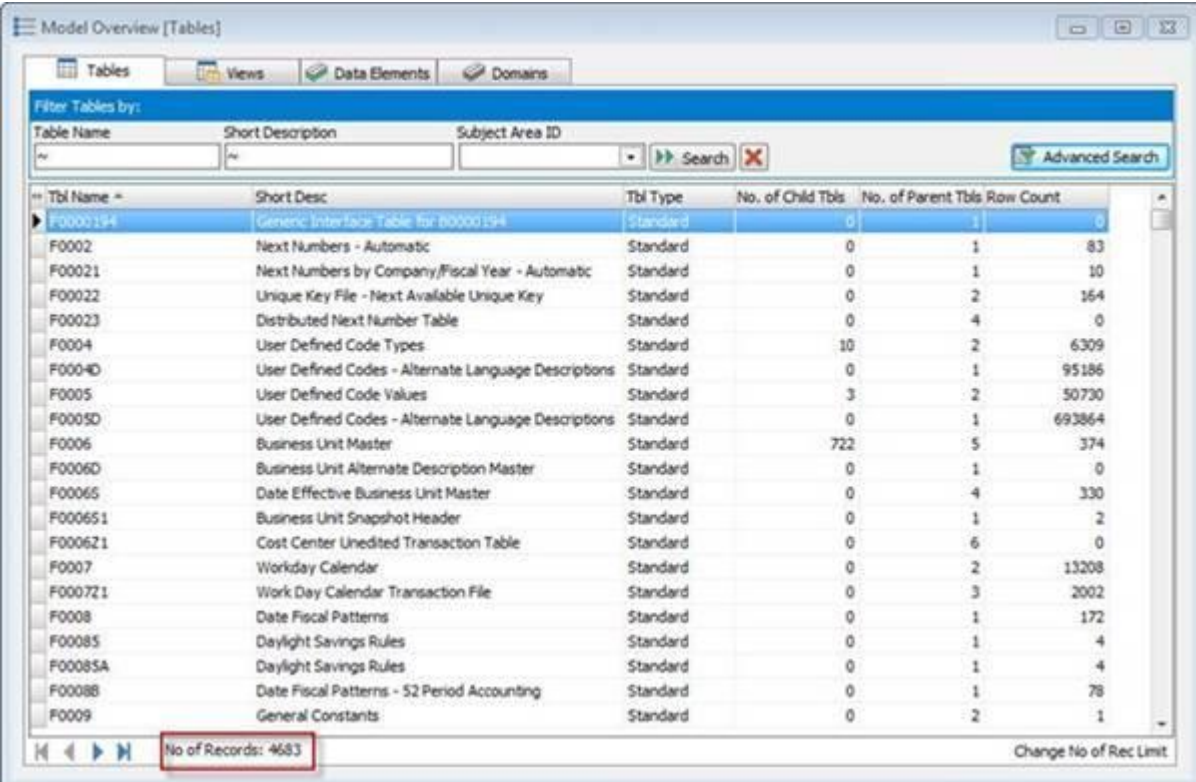


HOW TO FIND PERSONAL DATA IN JD EDWARDS FOR GDPR COMPLIANCE

The screenshot below shows a list of tables from a typical JD Edwards system which has been extracted into Safyr[®], in this case over 4,000 tables, which is around the number in most such systems.



Tbl Name	Short Desc	Tbl Type	No. of Child Tbls	No. of Parent Tbls	Row Count
F0000194	Generic Interface Table for 80000194	Standard	0	1	0
F0002	Next Numbers - Automatic	Standard	0	1	83
F00021	Next Numbers by Company/Fiscal Year - Automatic	Standard	0	1	10
F00022	Unique Key File - Next Available Unique Key	Standard	0	2	164
F00023	Distributed Next Number Table	Standard	0	4	0
F0004	User Defined Code Types	Standard	10	2	6309
F0004D	User Defined Codes - Alternate Language Descriptions	Standard	0	1	95186
F0005	User Defined Code Values	Standard	3	2	50730
F0005D	User Defined Codes - Alternate Language Descriptions	Standard	0	1	693864
F0006	Business Unit Master	Standard	722	5	374
F0006D	Business Unit Alternate Description Master	Standard	0	1	0
F00065	Date Effective Business Unit Master	Standard	0	4	330
F000651	Business Unit Snapshot Header	Standard	0	1	2
F0006Z1	Cost Center Unedited Transaction Table	Standard	0	6	0
F0007	Workday Calendar	Standard	0	2	13208
F0007Z1	Work Day Calendar Transaction File	Standard	0	3	2002
F0008	Date Fiscal Patterns	Standard	0	1	172
F00085	Daylight Savings Rules	Standard	0	1	4
F00085A	Daylight Savings Rules	Standard	0	1	4
F00088	Date Fiscal Patterns - 52 Period Accounting	Standard	0	1	78
F0009	General Constants	Standard	0	2	1

No of Records: 4683

We can do a search across all these tables to find any that contain a field with the 'business name' of the field containing the string 'birth'.

This reduces the list of over 4,000 tables to just 27. So there are 27 tables that have a field with the description of the field containing the string 'birth'.

Tbl Name	Short Desc	Tbl Type	No. of Child Tbls	No. of Parent Tbls	Row Count
F0091	A,B Vendor Information for Year-end IVA type - Italy	Standard	633	0	0
F0111	Address Book - Who's Who	Standard	7	3	890
F01112	Related Person	Standard	1	2	3
F01112Z1	Batch - Related Person	Standard	0	3	0
F0111Z1	Batch Who's Who Information	Standard	0	4	12
F01138	AB Data Permission List Definitions	Standard	0	1	0
F05137	ADP Employee Master Information	Standard	0	1	0
F054101	Employee Personal Profile Information History Table	Standard	0	3	0
F054101W	Employee Personal Profile Information Work Table	Standard	3	3	246
F060116	Employee Master Information	Standard	47	4	205
F0601161	Point-In-Time Employee Master	Standard	0	3	33
F060116W	EE Master Request File	Standard	0	0	0
F060116Z	Unedited Quick Hire Transaction File	Standard	0	5	4
F060117	Employee Master - International Data	Standard	7	2	205
F060120	Employee Master Additional Information File	Standard	0	2	205
F074001	New Hire Reporting Workfile - OneWorld Only	Standard	0	4	0
F083305	Mail Merge Header/Detail	Standard	0	4	0
F0833WF	Benefit Statement Work file	Standard	0	1	78
F08401	Applicant Master	Standard	42	3	22
F08401WF	Applicant Work File	Standard	0	4	0
F08901	Participant file	Standard	1	2	60

No of Records: 27

On the right of the list is a Row Count which gives the number of records in each table. Quite a few have zero – and this is not unusual in a JD Edwards system.

The query on 'birth' can be refined to filter out any of the tables with no data and this gives just 12 tables (this may be very different in another JD Edwards system, depending on what features and modules of JD Edwards the customer uses).

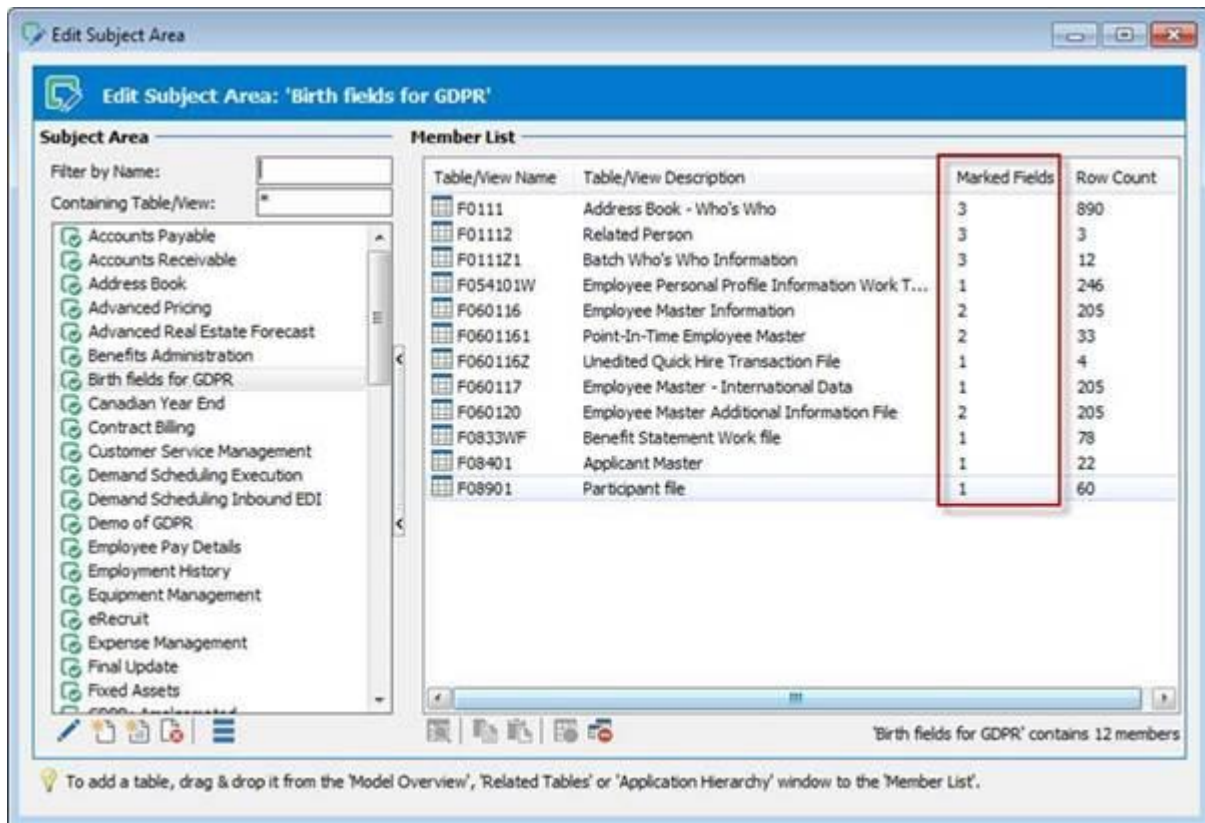
Tbl Name	Short Desc	Tbl Type	No. of Child Tbls	No. of Parent Tbls	Row Count
F0111	Address Book - Who's Who	Standard	7	3	890
F01112	Related Person	Standard	1	2	3
F0111Z1	Batch Who's Who Information	Standard	0	4	12
F054101W	Employee Personal Profile Information Work Table	Standard	3	3	246
F060116	Employee Master Information	Standard	47	4	205
F0601161	Point-In-Time Employee Master	Standard	0	3	33
F060116Z	Unedited Quick Hire Transaction File	Standard	0	5	4
F060117	Employee Master - International Data	Standard	7	2	205
F060120	Employee Master Additional Information File	Standard	0	2	205
F0833WF	Benefit Statement Work file	Standard	0	1	78
F08401	Applicant Master	Standard	42	3	22
F08901	Participant file	Standard	1	2	60

No of Records: 12

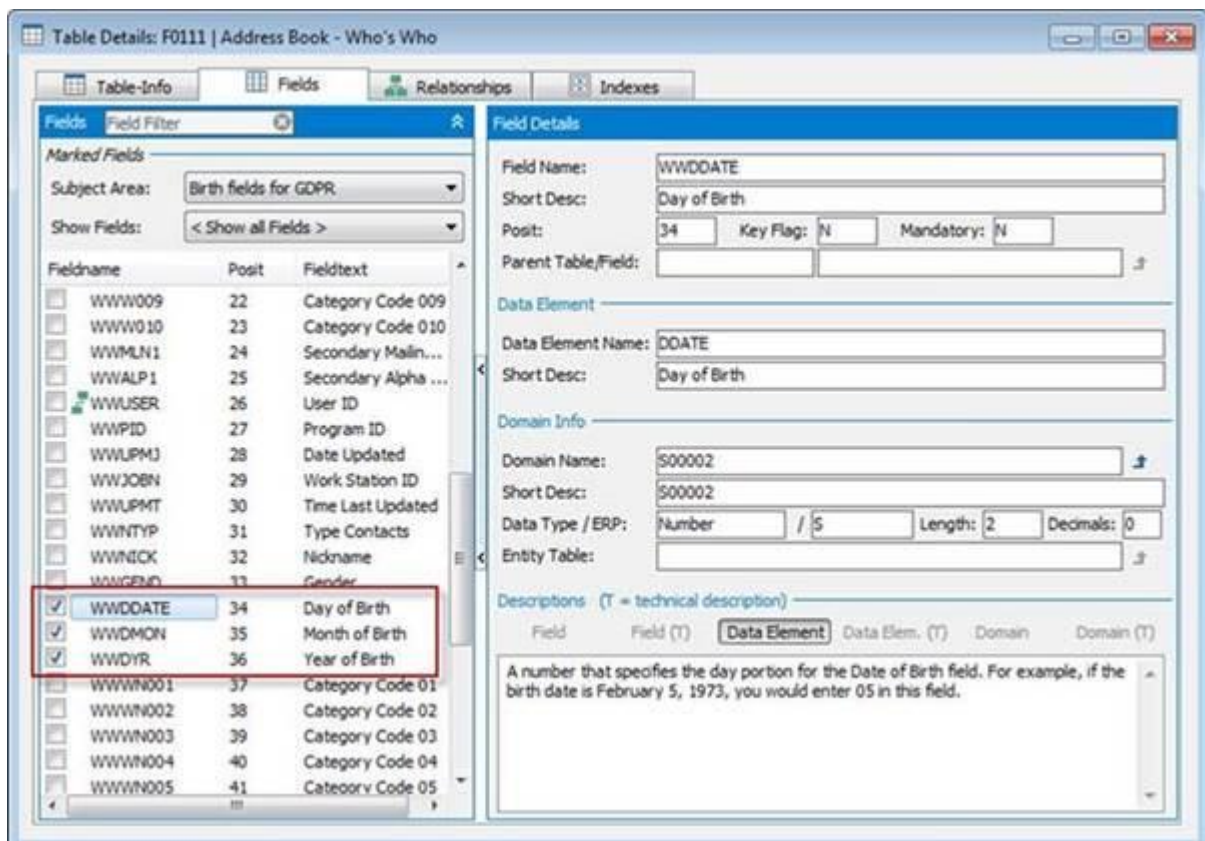
Having found a set of tables that contain likely Personal Data attributes, the results can be recorded using what Safyr calls a Subject Area. This is like a folder where we can group tables, and can be refined further by identifying individual fields.

It's easy to select the tables and add them to a Subject Area – and there is an option to 'mark' those fields that meet the selection criteria used (in this case 'data of birth' fields).

So the result is a group of tables that contain a field with the string 'date of birth' in the 'business', name and containing data.



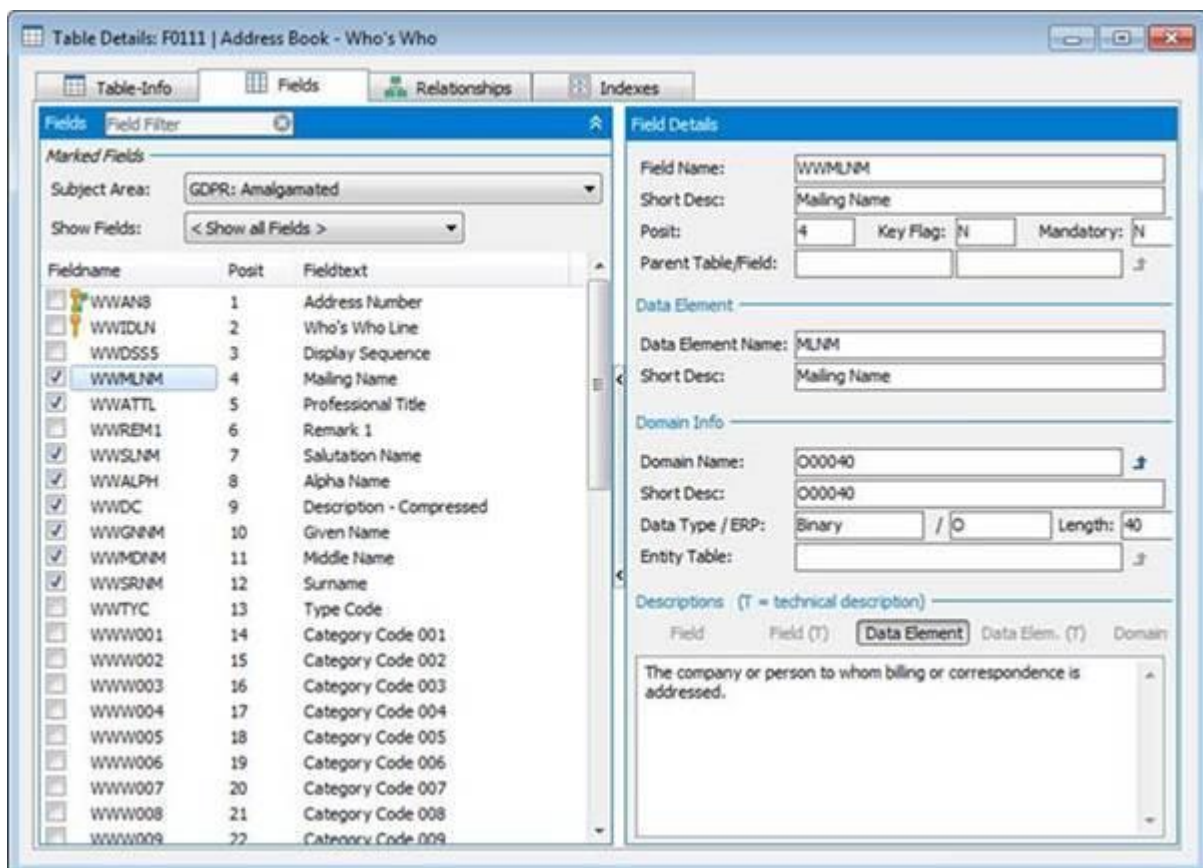
The 'Marked Fields' column shows how many fields on each table meet the search criteria. In the example above, table F0111 has 3 such fields. The table details can be displayed to show the individual fields.



We could do this same process for other Personal Data fields until we had assembled a set of GDPR Subject Areas that represent all the Personal Data categories that need to be assessed.

Safyr then has features for merging these Subject Areas to create a consolidated list of Personal Data items. This brings together the Personal Data fields for each of the categories (Birth, Address, Credit Card Number....) into one integrated set.

Here is the same table – ‘Address Book Who’s Who’ shown above – with the merged fields from these categories.



Having identified and marked the Personal Data fields using the method described above, a next step might be to make the attributes for these fields easily available to a wider audience.

Safyr has a number of formats that can be exported, one of the most popular for GDPR being Excel. It's easy to select exactly what properties to include in the spreadsheet.

Conclusion

Identifying candidate Personal Data attributes is but one step of any GDPR strategy. In the case of large application packages like JD Edwards it can be a very challenging first step. When maintaining compliance, we believe that metadata discovery software will be of value in keeping data catalogues, inventories and glossaries up-to-date with the locations of Personal Data across major packaged applications.

To book a free Safyr trial, please visit <https://www.silwoodtechnology.com/contact/free-trial-of-safyr/>